

SUSANNE S.D. THEMLITZ | *At Eye Level*

Vera Cortês, Agência de Arte

Inauguração dia 27 de Fevereiro às 22h

De dia 28 de Fevereiro a dia 4 de Abril de 2009

Terça a sexta das 11h às 19h

Sábado das 15h às 20h

E algures aí, uma certa melancolia

Novos trabalhos de Susanne S.D. Themlitz da série

"Parallel Landscapes / In Search of the Mirror Neurons"

Susanne S.D. Themlitz (1968, Lisboa) trabalha desde 2007 numa extensa série intitulada "Parallel Landscapes / In Search of the Mirror Neurons" em Colónia e Lisboa. Até à data, a artista realizou 32 obras sobre papel, a maior parte de grandes dimensões. Temática- e tecnicamente vasta, esta série ainda não se encontra concluída.

Uma parte destes trabalhos será exposta de 27 de Fevereiro a 4 de Abril de 2009 na Agência de Arte Vera Cortês, no âmbito da exposição individual "At Eye Level".

Nestas obras recentes Susanne Themlitz apresenta-nos mundos paralelos, feitos de paisagens extensas povoadas por criaturas estranhas e extraviadas. Serão elas cenários móveis, pertencentes a uma desconhecida galeria de horrores de um viciado em banda desenhada, ou memórias oníricas e divagantes de um apaixonado por pintura medieval?

Na amplitude da paisagem surgem mutantes humanos, criaturas com lóbulos, personagens hidrocéfalas e representações de órgãos como cérebros e corações. Surgem ainda caracóis, mosquitos, cactos e cogumelos que alcançam conexões enigmáticas. Despertam-se reverberações dos mundos fabulosos de Hieronymus Bosch ou dos espaços visionários de Max Ernst. São universos surreais, paisagens apocalípticas, habitadas por elementos em forma de colagens abstractas e figurativas. Elementos gráficos realistas ao lado de manchas de cor informes.

Susanne Themlitz vai trabalhando com motivos periódicos, provenientes das suas próprias esculturas e instalações. Assim, e em quase todas as obras desta nova série, surgem cabeças gigantes com corpos atrofiados. A artista trabalha com perspectivas basculares (perspectivas de rã, de pássaro ou mesmo humanas), distorções, recalcamientos e alongamentos. O ponto de vista desloca-se incessantemente. A coerência da perspectiva dissolve-se. Também as cores se tornam autónomas, desprendem-se em

jorros de tinta, aglomerando-se e multiplicando-se em sombreados. É com grande engenho que o desenho de Susanne Themlitz transborda para a colagem e para a pintura.

Atinge-se um paradoxo em que a ausência ocupa uma presença equivalente àquilo que é apresentado. Frequentemente as sombras distorcidas tornam-se autónomas. E algures aí, uma certa melancolia.

Carl Friedrich Schröer

Düsseldorf, Janeiro de 2009

(Tradução: Miguel Granja)

Com o apoio de:



SUSANNE S.D. THEMLITZ | *At Eye Level*

Vera Cortês, Art Agency

Opening – 27th February, 10 p.m.

Open from the 28th February to the 4th April 2009

Tuesday through Friday from 11:00 a.m. to 7:00 p.m.

Saturday from 3:00 to 8:00 p.m.

And somewhere out there, a certain melancholy

New work by Susanne S.D. Themlitz from the series

"Parallel Landscapes / In Search of the Mirror Neurons"

Susanne S.D. Themlitz (1968, Lisbon) has been working since 2007 in her studios in Lisbon and Cologne on her large series "Parallel Landscapes / In Search of the Mirror Neurons". To date, the artist has completed 32 works on paper, most of them large format works. Far-reaching both from the theme and technical point of view, this series isn't closed yet.

Many of these works will be shown for the first time at Vera Cortês Art Agency, from February the 27th until April 4th 2009, in her solo exhibition "At Eye Level".

Susanne Themlitz presents here parallel worlds, vast landscapes populated by strange, straying creatures. Are these scenes from the cabinet of horrors of a comics addict, or are they dreamy memories of an admirer of medieval painting?

In the vastness of this fantastic landscape, human mutants, winged creatures, hydrocephaly, and organs such as brains and hearts, snails, mosquitoes, cactuses, and mushrooms create mystifying relations. The images echo the fantasy world of Hieronymus Bosch or Max Ernst's visionary spaces. These are surreal worlds, landscapes at the end of time, which are populated by figurative and abstract visual elements that are juxtaposed as if in a collage. Realistic graphical forms appear side by side with formless color fields.

Susanne Themlitz works on recurring themes that arise from her own sculptures and installations. And so, almost all the pictures in this new series show giant heads on shrinking bodies. The artist works with tilting views (as seen from a frog, bird or even human perspective), distortion, compressions and distensions. The point of view is continuously displaced. The coherence of the perspective is shattered. Also the colors become autonomous, like color excrescences and clusters, or break free in a multitude of shades. Themlitz brings drawing into the realms of collage and painting with great ingenuity.

The absent becomes just as present as what is visibly represented. Frequently, shadows take on a life of their own. And somewhere there is a certain melancholy.

Carl Friedrich Schröer

Düsseldorf, January 2009

Supported by:

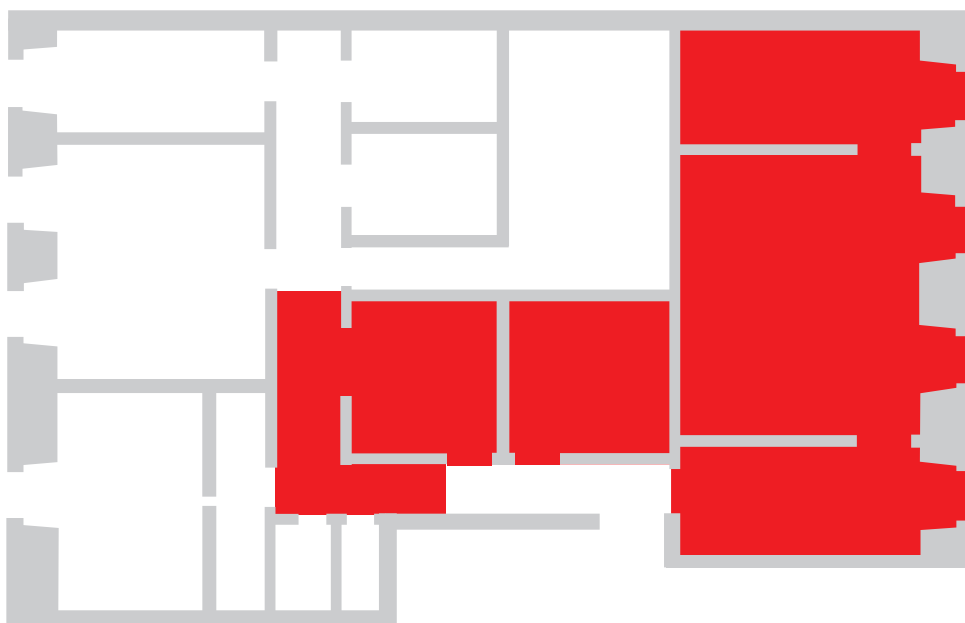


at eye level

susanne s.d. themlitz

vera cortès, art agency

from 27th february to 4th of april 2009



at eye level

susanne s.d. themlitz

exhibition views



at eye level

susanne s.d. themlitz

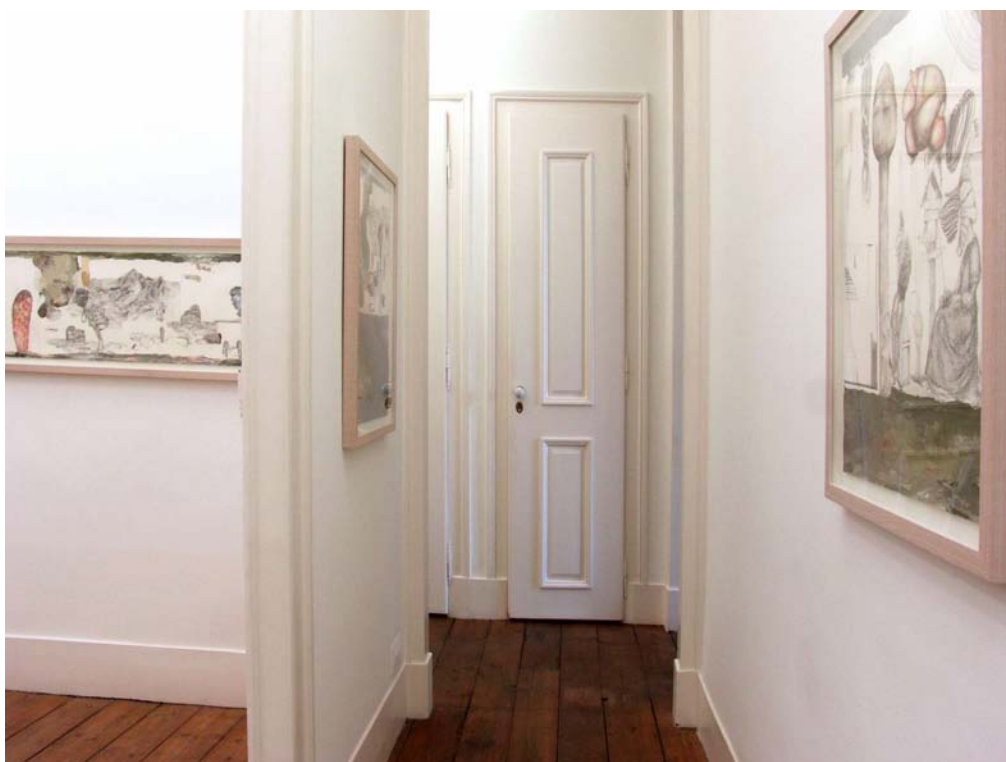
exhibition views



at eye level

susanne s.d. themlitz

exhibition views



at eye level

susanne s.d. themlitz

exhibition views



at eye level

susanne s.d. themlitz

exhibition views



from the series **parallel landscapes or in search of the mirror neurons (#19)**
2008 | 150 x 114 cm | graphite and wallpaper on paper

at eye level

susanne s.d. themlitz

exhibition views



from the series **parallel landscapes or in search of the mirror neurons (#20)**
2008 | 200 x 140,5 cm | graphite, charcoal, oil, acrylic, and watercolour on paper

at eye level

susanne s.d. themlitz

exhibition views



from the series parallel landscapes or in search of the mirror neurons (#21)
2008 | 53 x 70,5 cm | graphite, acrylic and watercolour on paper

at eye level

susanne s.d. themlitz

exhibition views

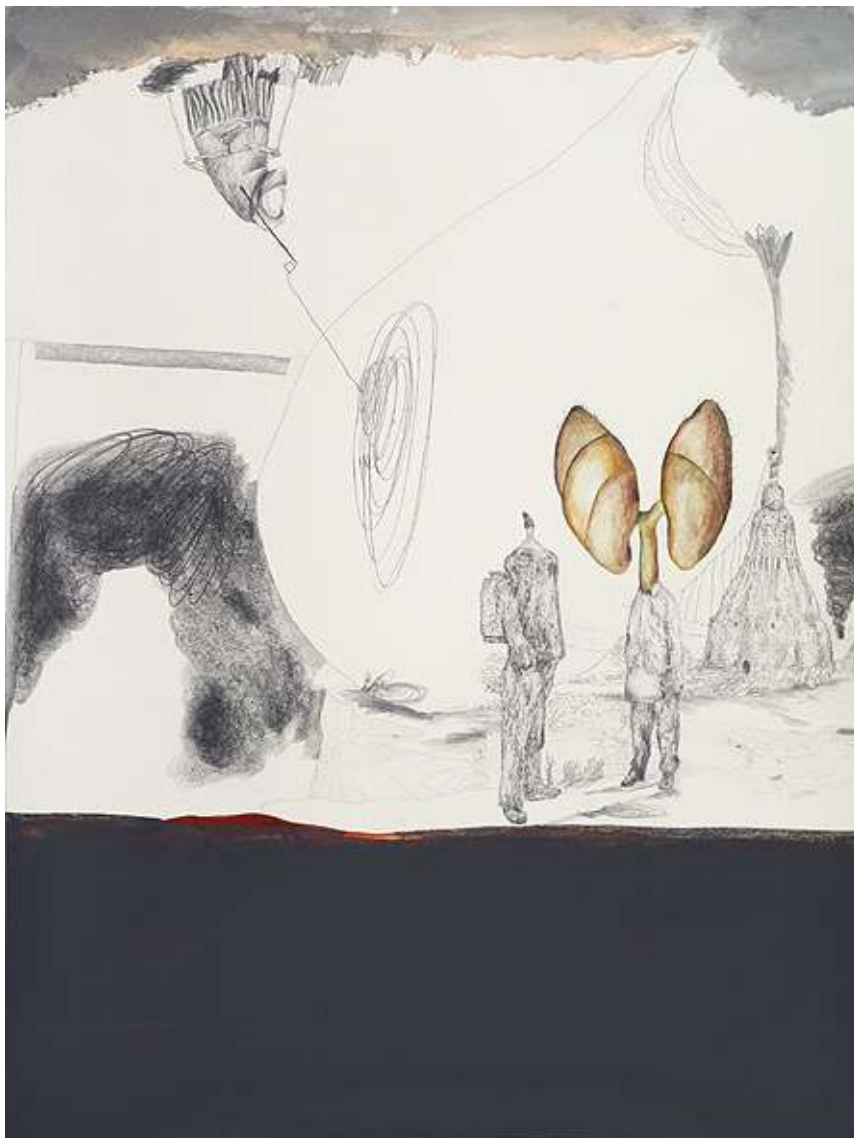


from the series parallel landscapes or in search of the mirror neurons (# 22)
2008 | 110,5 x 105,5 cm | graphite, oil, watercolour, collage of offset print and
wallpaper on paper

at eye level

susanne s.d. themlitz

exhibition views



from the series **parallel landscapes or in search of the mirror neurons (#23)**
2008 | 70,5 x 53 cm | graphite watercolour and acrylic on paper

at eye level

susanne s.d. themlitz

exhibition views



from the series **parallel landscapes or in search of the mirror neurons (#24)**
2008 | 135 x 112cm | graphite, oil, watercolour, acrylic and wallpaper on paper

at eye level

susanne s.d. themlitz

exhibition views



from the series **parallel landscapes or in search of the mirror neurons** (# 25)
2008-2009 | 91 x 70 cm | graphite, watercolour and acrylic on paper

at eye level

susanne s.d. themlitz

exhibition views



from the series **parallel landscapes or in search of the mirror neurons (#26)**
2008 | 91,5 x 70,5 cm | graphite, acrylic, watercolour, colage of offset print and
wallpaper on paper

at eye level

susanne s.d. themlitz

exhibition views



from the series **parallel landscapes or in search of the mirror neurons (#27)**
2008-2009 | 199 x 140,5 cm | graphite, watercolour and acrylic on paper

at eye level

susanne s.d. themlitz

exhibition views



from the series **parallel landscapes or in search of the mirror neurons (#28)**
2008 | 70,5 x 58 cm | graphite, watercolour and acrylic on paper

at eye level

susanne s.d. themlitz

exhibition views



from the series **parallel landscapes or in search of the mirror neurons (# 29)**
2008-2009 | 41 x 50 cm | graphite and acrylic on paper

at eye level

susanne s.d. themlitz

exhibition views



from the series **parallel landscapes or in search of the mirror neurons (#30)**
2008-2009 | 67 x 89,5 cm | graphite, watercolour and acrylic on paper

at eye level

susanne s.d. themlitz

exhibition views



from the series **parallel landscapes or in search of the mirror neurons (#31)**

2008 | 150 x 114 cm | graphite, watercolour and acrylic on paper

at eye level

susanne s.d. themlitz

exhibition views

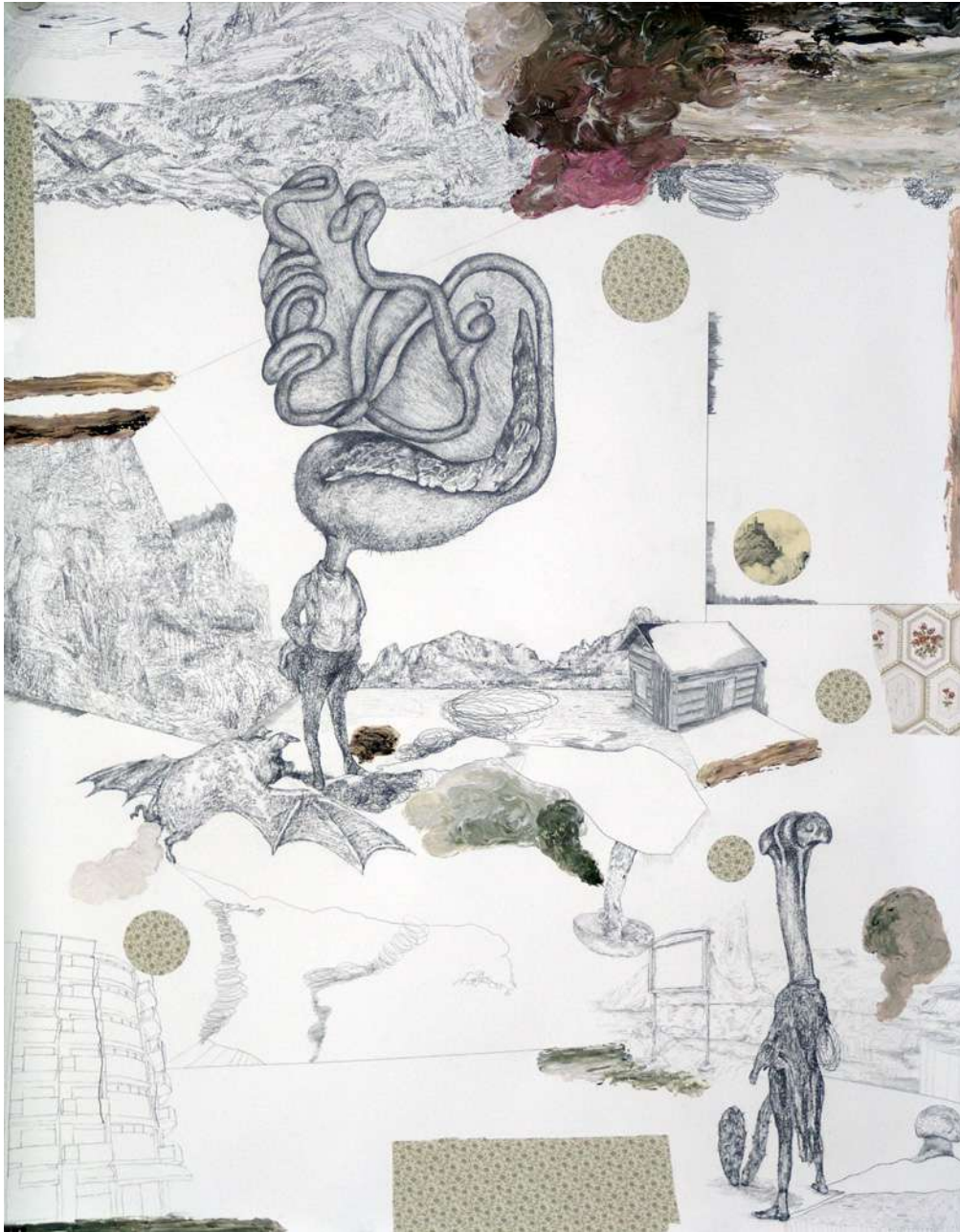


from the series **parallel landscapes or in search of the mirror neurons (#31)**
2009 | 105 x 114,5 cm | graphite, acrylic, wallpaper and off set print on paper

at eye level

susanne s.d. themlitz

exhibition views



from the series parallel landscapes or in search of the mirror neurons (#33)
2009 | 140 x 90 cm | graphite, acrylic, wallpaper and off set print on paper