

scroll down for english version

## CATARINA DIAS | Resto

Vera Cortês, Agência de Arte

Inauguração dia 9 de Novembro às 22h

De dia 10 de Novembro a dia 22 de Dezembro

Terça a sexta das 11h às 19h

Sábado das 15h às 20h

À partida não seria necessário haver intermediários para apresentar algo que está prestes a ser mostrado ao público. Há assim muito pouco ou mesmo quase nada para dizer, uma vez que o trabalho/coisas estão lá, no local designado. Resta-me esperar que as pessoas se encontrem na presença do meu não tão recente trabalho – de facto não houve por assim dizer nenhuma paragem no processo – há sim uma investigação constante, com encontros e desencontros.

Se o trabalho é um *continuum*, o seu problema, por sua vez, exige uma constante definição (estruturação e condensação) – é permanentemente sujeito à mudança –, por força de se complicar em cada momento, em cada situação.

Enquanto escrevo este texto, pergunto-me se o devia fazer. Sem obter resposta, acabo por permitir esta pequena interrupção para não encontrar qualquer conclusão.

Não há ninguém para citar e espero não encontrar nenhuma referência que me possa fazer sentir que estou a aceder a um entendimento ou à mera curiosidade de quem lê estas palavras.

[ Catarina dias ]

**CATARINA DIAS | Resto / Rest**

Vera Cortês, Art Agency

Opening – 9th November, 10 p.m.

Open from the 10th November to the 22nd December

Tuesday through Friday from 11 a.m. to 7 p.m.

Saturday from 3 to 8 p.m.

In principle, there should be no need for a mediator to present something that is about to be shown to the public. Thus, there is little or nothing to be said, since the work/things are there, at the predetermined place. So, I can only wait that the people will experience my not so recent work – there has been, in fact, no interruption in the process – on the contrary, there is a continuous investigation, with convergences and divergences.

If the work is a *continuum*, its problem, on the other hand, requires constant redefinition (structural organization and condensation) – it is continuously subject to change –, in consequence of it becoming more complex every moment, in every situation.

While I am writing this text, I wonder if this is the right thing to do. Without an answer, I allow this short interruption, only to reach no conclusion at all.

There is nobody to quote, and I hope to find no reference that might make me feel I am assenting to a judgment or to the mere curiosity of whoever is reading these words.

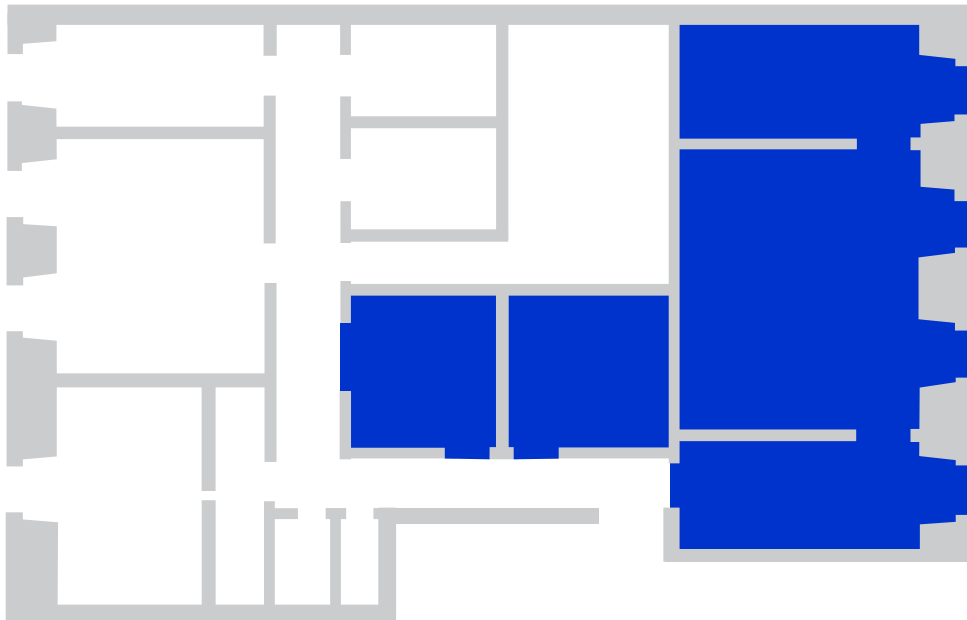
[ Catarina Dias ]

# CATARINA DIAS

## Resto

vera cortês, art agency

from 9th november to 22nd december 2007



# CATARINA DIAS

## Resto

views of the exhibition



# CATARINA DIAS

## Resto

views of the exhibition



# CATARINA DIAS

## Resto

views of the exhibition



# CATARINA DIAS

## Resto

views of the exhibition





# CATARINA DIAS

Resto





# CATARINA DIAS

Resto



# CATARINA DIAS

## Resto

works



ha ha ha wall | 2007 | neon lights with timer | size: 14 x 90 cm

# CATARINA DIAS

## Resto

works



time does not tolerate repetitions (absolute boredom) | 2007 | china ink | size: 51 x 41,5 cm



inslave | 2007 | china ink and watercolor on paper | size: 111 x 72 cm

# CATARINA DIAS

## Resto

works



within the pure relation of abandonment (absolute boredom) | 2007 |  
china ink on paper | size: 111 x 72 cm



physiognomy encumbrance | 2007 | china ink on paper | size: 81 x 76 cm



# CATARINA DIAS

## Resto

works



(absolute boredom) | 2007 | china ink on paper | size: 63 x 46 cm

# CATARINA DIAS

## Resto

works



(absolute boredom) | 2007 | china ink on paper | size: 63 x 46 cm



transient nature (SUMMA) | 2007 | china ink on paper | size: 79 x 63 cm

# CATARINA DIAS

## Resto

works



backyard welfare (SUMMA) | 2007 | china ink and watercolor on paper | size: 79 x 85 cm



welfare (SUMMA) | 2007 | china ink and watercolor on paper |  
size: 132 x 140 cm



# CATARINA DIAS

## Resto

works



(simple being) skin and nerves (riation) | 2007 | china ink and watercolor  
on paper | size: 66,5 x 52,5 cm

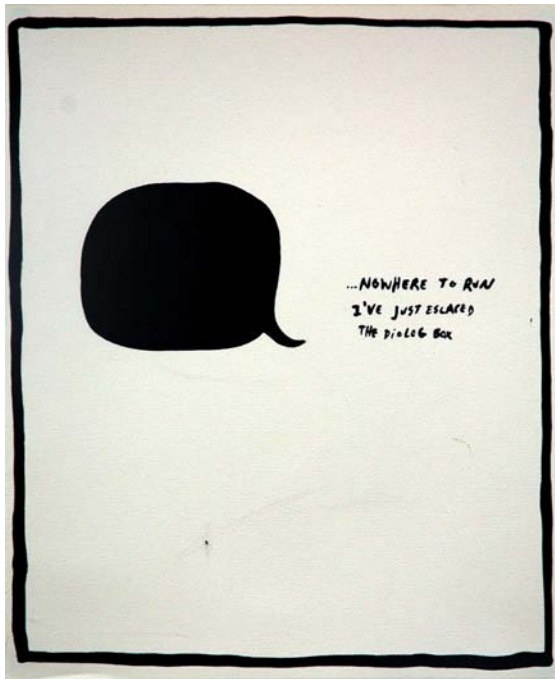


(simple being) | 2007 | china ink on paper | size: 29,7 x 21 cm

# CATARINA DIAS

## Resto

works



... nowhere to run | 2007 | china ink on paper | size: 45 x 37 cm



carpet!! | 2007 | china ink on paper | size: 59,5 x 45 cm

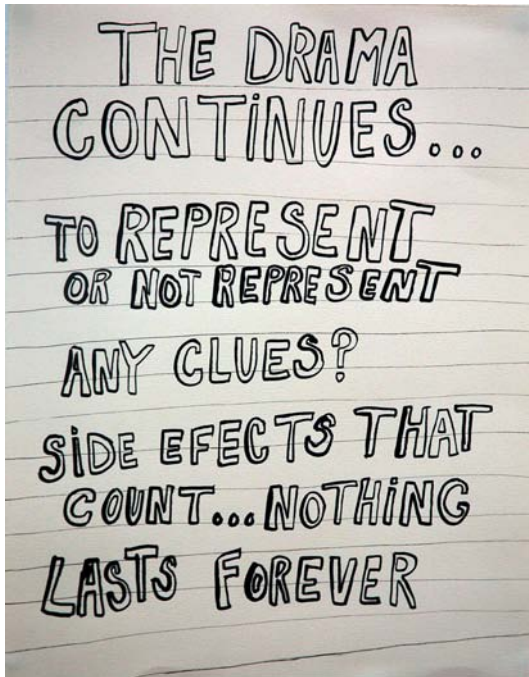


i'm the floor | 2007 | china ink on paper | size: 53 x 48,5 cm

# CATARINA DIAS

## Resto

works



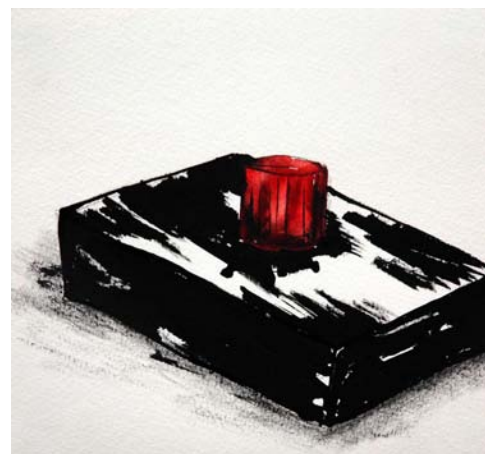
the drama continues... | 2007 | china ink on paper | size: 49 x 38,5 cm



B#2 - i don't feel guilty | 2007 | china ink on paper | size: 16,5 x 14 cm



similar | 2007 | china ink on paper | size: 28,5 x 28,5 cm

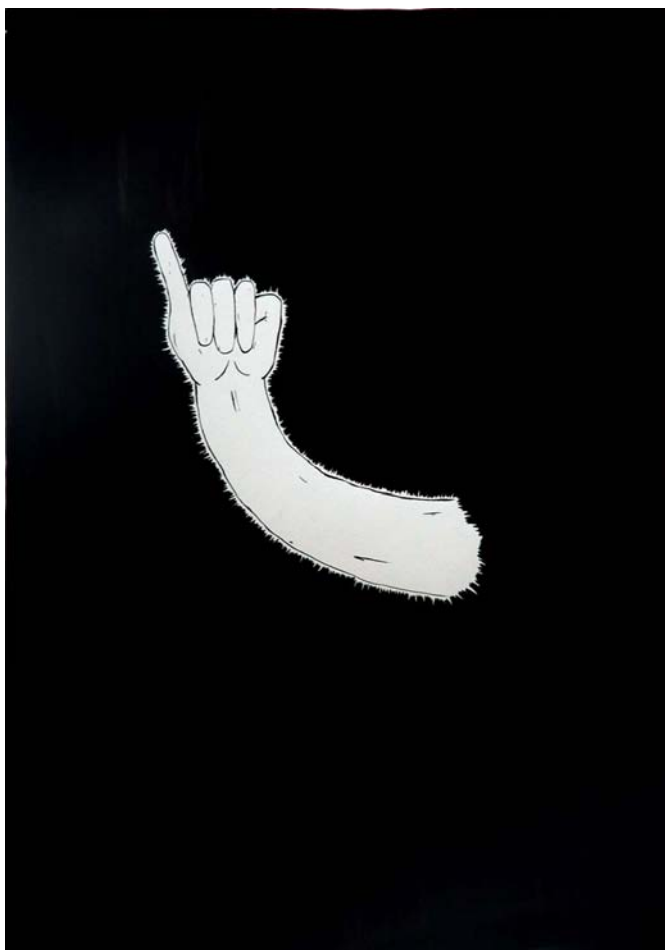


button to push | 2007 | china ink on paper | size: 14 x 13,5 cm

CATARINA DIAS

Resto

works



into presence | 2007 | china ink on paper | size: 59,5 x 84 cm

CATARINA DIAS

Resto

works



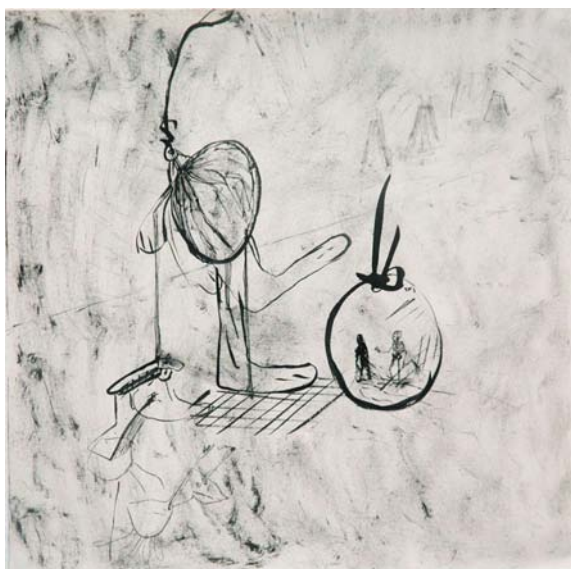
into presence | 2007 | china ink on paper | size: 100 x 140 cm



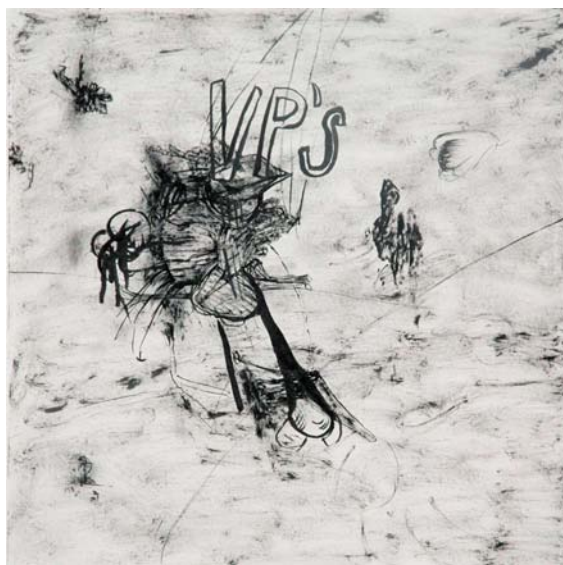
# CATARINA DIAS

## Resto

works



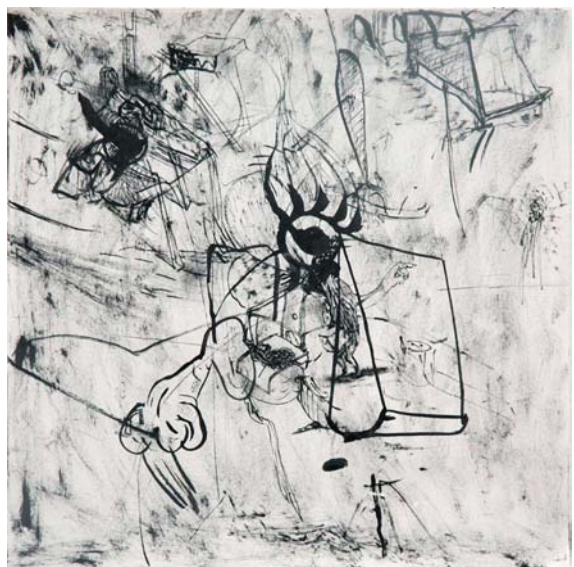
(absolute boredom) | 2007 | china ink on paper | size: 25 x 25 cm



# CATARINA DIAS

## Resto

works



(absolute boredom) | 2007 | china ink on paper | size: 25 x 25 cm





CATARINA DIAS

Resto

works



(absolute boredom) expand (simple being) | 2007 | china ink on paper | size: 200 x 140 cm